

# NETWORK ADMINISTRATION USING MICROSOFT® (310)

## REGIONAL – 2017

*TOTAL POINTS* \_\_\_\_\_ (500 points)

**Failure to adhere to any of the following rules will result in disqualification:**

- 1. Contestant must hand in this test booklet and all printouts. Failure to do so will result in disqualification.**
- 2. No equipment, supplies, or materials other than those specified for this event are allowed in the testing area. No previous BPA tests and/or sample tests or facsimile (handwritten, photocopied, or keyed) are allowed in the testing area.**
- 3. Electronic devices will be monitored according to ACT standards.**

No more than sixty (60) minutes testing time

Property of Business Professionals of America.  
May be reproduced only for use in the Business Professionals of America  
*Workplace Skills Assessment Program* competition.

**Identify the letter of the choice that best completes the statement or answers the question. Mark A if the statement is True. Mark B if the statement is False.**

1. Which command-line utility allows you to view current, incoming and outgoing network connections?
  - a. NETSTAT
  - b. PING
  - c. IPCONFIG
  - d. ROUTE
  
2. You are the network administrator. The network consists of a single Active Directory domain named demo.com and a single subnet. All servers run Windows Server 2012. The network contains 150 client computers and 16 servers. All computers on the network use the 10.10.0.0/16 address scheme.

Bill, your manager, instructs you to place the 16 servers into a separate subnet that uses the 192.168.10 public addressing scheme. You must plan for a maximum of 30 servers in the future. You need to configure a new subnet mask. The subnet mask must allow a sufficient number of IP addresses for the existing servers and future growth. However, you want to conserve addresses as much as possible.

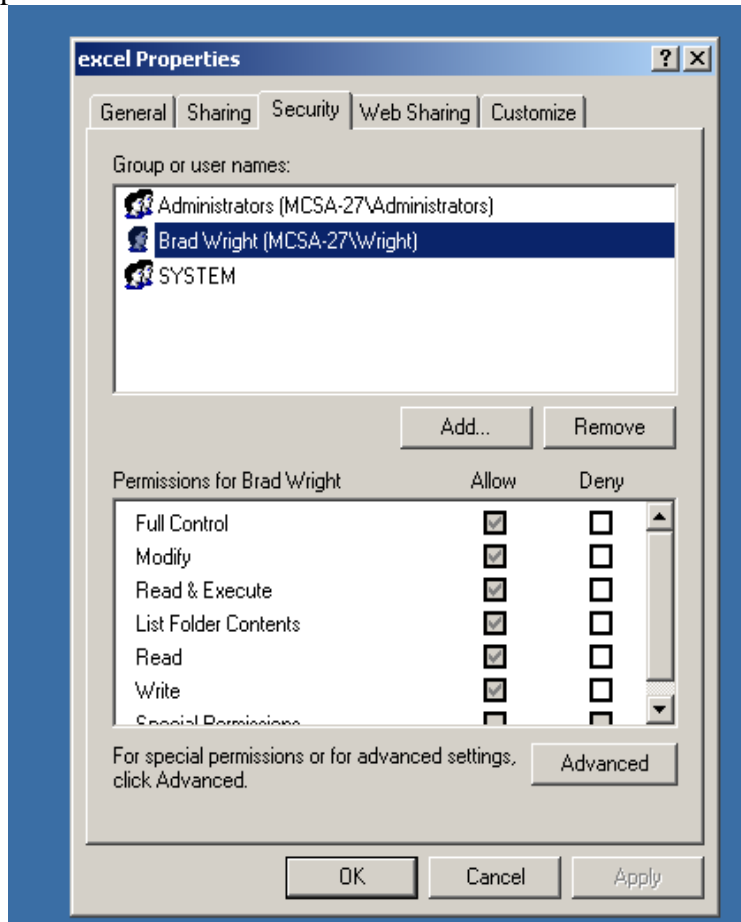
Which subnet mask should you use?

- a. 255.255.255.224
  - b. 255.255.255.240
  - c. 255.255.255.248
  - d. 255.255.255.252
  
3. You manage a network for a small company that is on a workgroup. Users are complaining that they have to wait a long time for their print jobs to finish. You decide to configure a print server using Windows 7 Enterprise and attach a local printer to the computer. You share the printer and add it to each of the workstations. How many users will be able to connect to the printer simultaneously?
  - a. 6
  - b. 10
  - c. 20
  - d. unlimited
  
4. Server 2012 allows Remote Desktop Connections by default.
  - a. True
  - b. False
  
5. What features are included in Windows 8 and Windows Server 2012 that can be used to host and manage a website?
  - a. IIS
  - b. DHCP
  - c. DNS
  - d. WINS

6. Which of the following is *not* a valid IP Address?
  - a. 169.254.138.78
  - b. 1.2.3.4
  - c. 172.16.257.18
  - d. 10.10.10.1
  
7. Which of the following is *not* an NTFS folder permission on a Windows 7 Enterprise workstation?
  - a. read
  - b. write
  - c. delete
  - d. modify
  
8. Which of the following is *not* a way to upgrade Windows 7 editions?
  - a. Purchase a retail version of a higher level Windows 7 edition
  - b. Run the Migration tool from another Windows 7 computer
  - c. Purchase a Windows 7 product upgrade package from a retailer
  - d. Use the Windows Anytime Upgrade tool
  
9. What is the agreement which must be accepted when installing Windows?
  - a. Fair rights license
  - b. GNU license
  - c. WinPE license
  - d. EULA
  
10. Which Windows file system allows for encryption, compression and file and folder level security?
  - a. FAT
  - b. FAT32
  - c. EXT3
  - d. NTFS
  
11. You are a new helpdesk trainee at TranslucentOrange. You have been assigned the task to deploy a new application to the marketing department. The new application is delivered as an .msi file. You plan to install the application by using the Msiexec.exe program, and you need to ensure that the installation process does *not* display a user interface. What should you do?
  - a. Manually perform a passive installation of the application
  - b. Manually perform a quiet installation of the application
  - c. Use a logon script, to run the Msiexec.exe program
  - d. Use the Run as utility to run the Msiexec.exe program

12. Windows 8 Professional supports how many simultaneous file sharing network connections?
  - a. 6
  - b. 10
  - c. 20
  - d. unlimited
  
13. Which type of image contains all of the elements of a workstation configuration, including applications drivers, updates, and all configuration settings?
  - a. thick images
  - b. thin images
  - c. Full images
  - d. complete images
  
14. What is a default port for Windows remote desktop protocol?
  - a. 3389
  - b. 443
  - c. 80
  - d. 21
  
15. Integrating service packs and updates to the Windows installation files is known as?
  - a. slipstreaming
  - b. integration
  - c. combining
  - d. execution

16. Using the screen capture from below, where would you select to view a user's effective permissions?



- a. The Sharing tab
  - b. The Customize tab
  - c. The Advanced button
  - d. The Remove button
17. You are auditing a Windows 7 Professional workstation for failed object access. Auditing is configured on the folder but the event is *not* showing up in the appropriate log file. What is most likely the cause of this problem?
- a. Auditing is not configured in the local security policy.
  - b. The computer is formatted with the FAT32 file system.
  - c. The event viewer is not installed.
  - d. Disk quotas are not configured properly.
18. What is the default partition style used in Windows 7?
- a. MBR
  - b. GUID
  - c. NFS
  - d. DFS

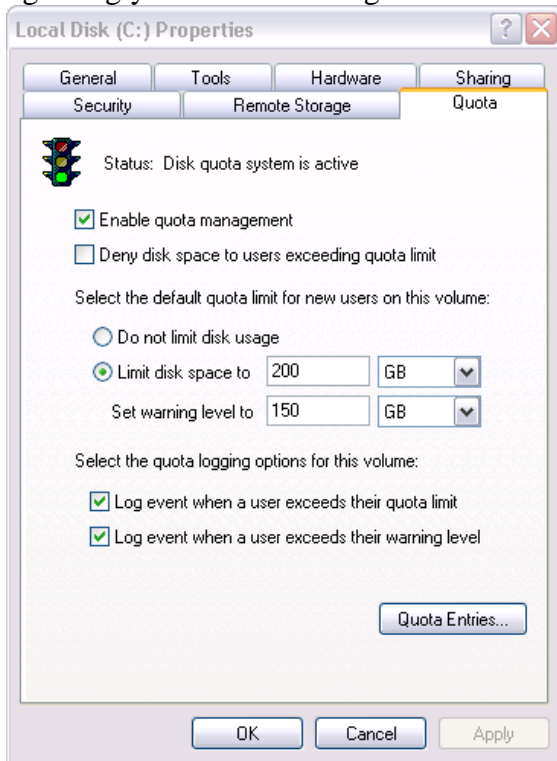
19. What is the default IP address of the loopback adapter on a Windows 7 workstation?
- 169.254.0.17
  - 10.10.10.10
  - 127.0.0.1
  - 1.1.1.1
20. You are *unable* to connect to any resources on your company network, so you open up a command prompt and type ipconfig. Your workstation indicates that it has an IP address of 169.254.10.1. What does this mean?
- The DHCP server is down.
  - The network card has been disabled.
  - Drive C: was converted to FAT32.
  - This IP address is normal.
21. What is the default subnet mask for the IP address 10.97.2.6?
- 255.0.0.0
  - 255.255.255.248
  - 255.255.0.0
  - 10.0.0.1/24
22. You are senior helpdesk technician at Crazy Stuff, Inc. Crazy Stuff developed a custom database application that they use to track sales information. The database application saves its data in files with a .dta file extension in the same shared folder that contains several shared Microsoft Word 2010 documents. Your manager reports that the application's .dta files are becoming corrupted from time to time. Each time the files are corrupted they must be restored from a tape backup, which is a time consuming process. Users with portable computers often want to have the Word 2010 documents in the shared folder available offline, and you discover that several users also select the .dta files to be made available offline. You suspect that this is the reason the .dta files become corrupted. You need to ensure that users cannot make the .dta files available offline. Your solution must not affect user access to the other files in the folder. What should you do?
- Use Remote Assistance to disable offline files on the local computer policy of all portable computers.
  - Modify the file share that contains the .dta files, and disable offline file caching.
  - Ask a network administrator to modify the file permissions on the .dta files to assign all users the Deny Change permission.
  - Ask a network administrator to modify domain security policy to add the data file type to the "Files not cached" domain group policy.
23. What enables users to key in a user-friendly name, such as BPA.org, which when resolved, will be converted automatically to its proper IP address?
- DHCP
  - DNS
  - FQDN
  - USFG

24. Which group type is mainly used to organize user objects into logical administrative units?
- Local
  - Domain Level
  - Global
  - Universal
25. What is used to specify which bits of an IPv4 address are used for the network identifier and which bits are used for the host identifier?
- default gateway
  - subnet mask
  - MAC address
  - OSI model
26. What must be identical on a Windows 7 Professional workstation to support printer pooling?
- the printers
  - the printer drivers
  - the network cards
  - the hard drives
27. Which of the following server manager features are used to manage a PKI (Private Key Infrastructure)?
- Dynamic Host Configuration Services
  - Domain Name Services
  - Active Directory Certificate Services
  - Windows Server Update Services
28. An assistant needs to have the right to reset user accounts and passwords but no other administrative rights. Which tool would use to accomplish this?
- passwd -u
  - The Advanced Security Settings dialog box
  - The User Rights Delegation wizard
  - DSACLS
29. You copy several files from one folder to another folder in a different drive. What permissions do the files in the destination folder have?
- The same permissions that they had in the source folder
  - The same permissions that the target folder has
  - No permissions
  - Everyone has full control
30. Which of the following is a valid upgrade path to Windows Server 2012?
- Windows Server 2003 Standard to Windows Server 2012 Standard
  - Windows Server 2008 Standard to Windows Server 2012 Standard
  - Windows Server 2008 R2 32-bit to Windows Server 2012 64-bit
  - Windows 7 Ultimate to Windows Server 2012 Essentials

31. What do you need to do to activate Public folder sharing in Windows 8?
- Turn on Public Folder Sharing under "Change advanced sharing settings", in the Network and Sharing Center
  - Right click the User Account and enable the Public Folder service
  - Right click the Public folder, and select Enable Public Sharing
  - Right click the folder, and select Properties, then Sharing
32. Which of the following is the term for the component that enables DHCP clients to communicate with DHCP servers on other subnets?
- forwarder
  - resolver
  - scope
  - relay agent
33. Which of the following *cannot* contain multiple Active Directory domains?
- trees
  - forests
  - organizational units
  - sites
34. You are a helpdesk technician at BitBit.com. You get a call from a graphics designer named Pierre, who has installed a new application and an updated video driver on his Windows 7 Professional computer. After the installation, Pierre restarted his computer and logged on. However, when he moves Windows and dialog boxes, the display is distorted. You need to ensure that Pierre can run his other applications without video distortion while you look for the correct video driver for the new application. What should you do?
- Use Device Manager to roll back the video driver
  - Restart the computer with the last known good configuration
  - Run the Msconfig utility, and select the /BASEVIDEO check box
  - Use the Add Hardware Wizard to scan for new hardware; install any found hardware
35. What can be used to add, delete, or modify objects in Active Directory?
- LDIFDE
  - NETSH
  - DCPROMO
  - NSLOOKUP
36. What program is used to configure and troubleshoot the Windows 7 startup process?
- Performance Monitor
  - Event Viewer
  - System Configuration tool
  - Service Manager



37. Which NTFS folder permission will allow for the deletion of folders?
- read
  - write
  - modify
  - read and execute
38. Several users in the advertising department share a Windows XP workstation to store data such as reports and brochures. You need to conserve disk space on this computer. You configure disk quotas as shown in the above capture. Which statement is true regarding your current configuration?



- Each user will not be able to save more than 200 GB.
  - Users can take up as much disk space as they like; they will only receive a warning.
  - Any user now has a limit of 350 GB.
  - Disk Quotas are not enabled for this drive.
39. You suspect that a user has been accessing files on another computer on the domain without authorization. What would you most likely audit to track this unauthorized access?
- Account Management
  - Logon Events
  - Object Access
  - Privilege Use

40. What option is used to make sure a user does *not* reuse the same password when changing a password?
- Enforce Password History
  - Maximum Password Age
  - Minimum Password Age
  - Password must meet Complexity Requirements
41. What feature of Microsoft Windows Server 2012 assigns IP address to computers on a domain?
- DHCP
  - DNS
  - Active Directory
  - IIS
42. Which of the following roles can be classified as an infrastructure service?
- Windows Reporting Services
  - Web Server (IIS)
  - DHCP
  - Remote Desktop Services
43. What is the default port used by HTTP?
- 21
  - 22
  - 80
  - 443
44. What Windows tool allows you to prepare a Windows 7 Professional operating system for imaging?
- Setupmanager
  - Sysprep
  - UDF
  - Checkupgradeonly
45. Which wireless technology is considered a *weak* encryption protocol?
- 802.1x
  - WEP
  - WPA
  - WPA2
46. You need to be able to connect to a shared folder named Accounting on Server1 on your domain. What is the correct UNC path to the Accounting folder?
- \\accounting-server1
  - \\server1\accounting
  - http://accounting
  - \\server1\

47. Sandy is an accountant at your company. Sandy has Read and Execute permissions to the sales folder. Sandy is also a member of the accountants' group that has the Modify permission to the sales folder. What effect does denying Sandy's individual user account permission to the folder have?
- None
  - She still has the Read and Execute permission
  - She is denied permission to the folder
  - She now has full control
48. What kind of group do you use to consolidate groups and accounts that span multiple domains or the entire forest?
- Local
  - Global
  - Default
  - Universal
49. How many layers are in the OSI Reference Model?
- 4
  - 7
  - 10
  - 12
50. Which of the following accounts *cannot* be configured in Windows Server 2012?
- Local Accounts
  - Domain Accounts
  - Built-In Accounts
  - Network Accounts